



*New Products With Improved Performance*

The most complete line of

# *Air Filtration Products*

Commercial, Industrial, Hospital, Gas Turbine and  
Paint Filtration Applications



Precision Filtration Products · P.O. Box 218 Pennsburg, PA 18073  
Phone: 215-679-6645 · Fax: 215-679-6648 · sales@precisionfiltration.com · www.precisionfiltration.com

# A Complete Line of Air Filtration Products



## Multi-Pleat XL8 MERV 8 Extended Surface Pleated Panel Filters

- MERV 8 and MERV-A 8 performance ratings.
- Mechanical MERV 8 media is not reliant on electrostatic charge for efficiency.
- Low resistance to airflow.
- High dust holding capacity.
- Sturdy double-wall frame design.
- Moisture-resistant beverage board frame.
- Standard and High Capacity models.
- Available in 1", 2", 4" and 6" depths.
- UL Classified.

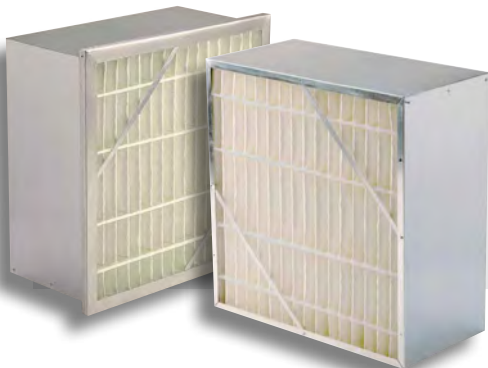
ASHRAE Efficiency: 30-35%  
MERV Performance Rating: 8

*Our most popular pleated filters*

## Multi-Sak Extended Surface Pocket Filters

- Versatile pocket filter provides economical high efficiency filtration in commercial and industrial HVAC systems of all types.
- Two media options, Series S synthetic and Series G microfiberglass.
- Exclusive Triple-Lock construction technique for added durability and longevity.
- Unique span-stitch design is sealed with thermoplastic adhesive bead to eliminate air bypass and leakage.
- Standard 13/16" header. 1-1/8" thickness also available.
- UL Classified.

ASHRAE Efficiencies: 35%, 50%, 65%, 85%, 95%  
MERV Performance Rating: 8-15  
Consult Bulletin: K-228-B



## Multi-Flo Rigid Air Filters

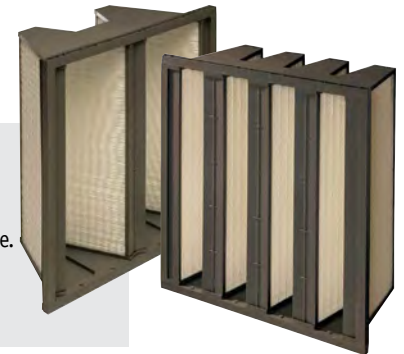
- Designed for use in variable-air-volume systems and HVAC applications of all types.
- Sturdy, lightweight galvanized steel cell sides.
- Two media options: Series S synthetic and Series G microfiberglass.
- Single header and no-header styles.
- UL Classified.

ASHRAE Efficiencies: 45%, 65%, 85%, 95%  
MERV Performance Rating: 10-15

## DuraMAX 2v & DuraMAX 4v Minipleat Filters

- 12" deep, extended surface minipleat V-style filter provides unequalled combination of low resistance to airflow, high efficiency, and prolonged filter life.
- Minipleat 2v design packs 110 ft<sup>2</sup> of media and 4v design packs 194 ft<sup>2</sup> of media in a 24x24x12 frame.
- Rugged, lightweight plastic frame is 100% incinerable.
- Several standard sizes available.
- UL Classified.

ASHRAE Efficiencies: 65%, 75%, 85%, 95%, 98%  
MERV Performance Rating: 11-16



## Industrial Cartridge Filters

- Multiple media, core and end cap options for different environments.
- Durable construction with high moisture-resistance.
- Replaces OEM manufactured filters.
- Uniform pleat spacing.

MERV Performance Rating: 11-15

Precision Filtration Products · P.O. Box 218 Pennsburg, PA 18073

Phone: 215-679-6645 · Fax: 215-679-6648 · sales@precisionfiltration.com · www.precisionfiltration.com





## Multi-Cell Rigid Air Filters

- Designed for use in variable-air-volume systems and HVAC applications of all types.
- Microfiberglass media with Double-Edge™ corrugated aluminum separators.
- Available in economy model LC Rigid with reduced media area.
- Metal or wood cell sides. Other specialized cell sides available.
- Single header, double header, and no-header styles.
- UL Classified.

ASHRAE Efficiencies: 65%, 85%, 95%  
MERV Performance Rating: 11-15

## MicroMAX and MicroMax PL Minipleat Filters

- Extended surface air filters which utilize revolutionary minipleat technology to achieve high efficiencies and low pressure drop.
- Available in 2", 4" and 6" depths.
- Compact, space-saving depth has 125 ft<sup>2</sup> media in a 24x24" filter.
- Moisture-resistant beverage board, galvanized, or plastic frame.
- No-header and single header styles.
- UL Classified.

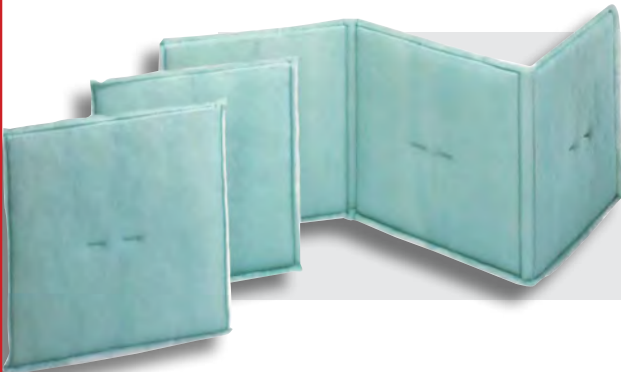
ASHRAE Efficiencies: 65%, 85%, 95%  
MERV Performance Rating: 11-15



## Maxi-Grid Internally Supported Panel Filters

- Internally supported polyester panel filters designed for general HVAC, paint spray booths, and fan coil units.
- 5 styles available: MG200 3 Ply, MG300 3 Ply, MG400 4 Ply, MG550 3 Ply, and MG600 Diffusion Panel.
- Self-sealing design eliminates air bypass, no clips required.
- Available in single panels and link panels.
- Excellent for rooftops and other high moisture applications.
- Slip-On Sleeve style also available.
- UL Classified.

ASHRAE Efficiencies: 20%-60%  
MERV Performance Rating: 7-11



## BioMAX HEPA Filters

- BioMAX HEPA filters provide the contaminant-free air required in many industrial, medical and pharmaceutical applications.
- Microfiberglass media with Double-Edge™ corrugated aluminum separators.
- Metal or wood cell sides.
- Standard Capacity (1100 CFM) or High Capacity (2000 CFM) available.
- UL Classified.

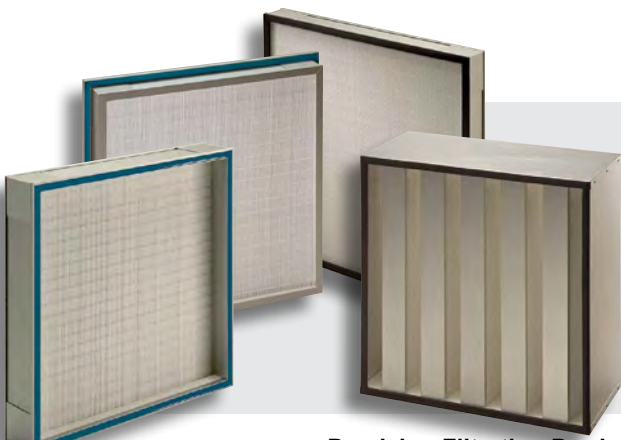
Efficiency Range: 95%-99.999% PAO (Polyalpaolefin) @ .3 micron particles



## BioMAX CS Minipleat HEPA Filters for Clean Room and High Purity Applications

- Compact Series BioMAX CS HEPA filters are designed for use in ceiling diffusers, ducted modules, hospitals and other critical clean room applications.
- Microfiberglass media with thermo-plastic glue-bead minipleat separators.
- Anodized extruded aluminum cell sides, available in standard and custom sizes.
- Gasket seal, gel seal, and knife-edge styles available.
- BioMAX-V2000 for High Capacity 2000 CFM applications.
- UL Classified.

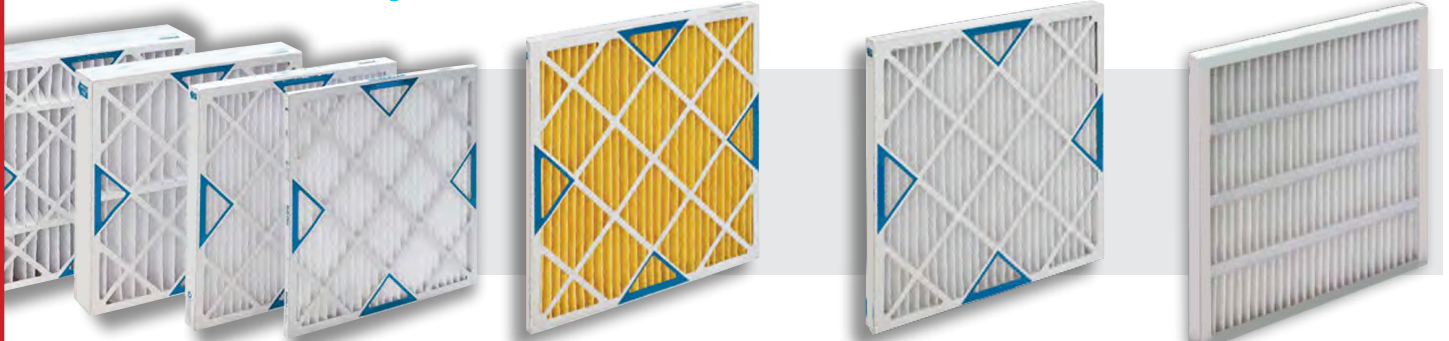
Efficiency Range: 95%-99.999% PAO (Polyalpaolefin) @ .3 micron particles



Precision Filtration Products · P.O. Box 218 Pennsburg, PA 18073

Phone: 215-679-6645 · Fax: 215-679-6648 · sales@precisionfiltration.com · www.precisionfiltration.com

# Extended Surface Pleated Panel Filters



## Multi-Pleat XL8 and XL8 HC

- MERV 8 and MERV-A 8 extended surface pleated panel filters for use in commercial and industrial air filtration systems where a higher degree of clean air is desired.
- Standard Capacity and High Capacity media area options.
- High performance synthetic filter media.
- Durable high wet-strength beverage board frame.
- Rust resistant galvanized-dipped expanded metal support grid.
- Available in a wide range of standard and custom sizes.
- Most standard sizes available in economical K40 style.
- UL Classified.

ASHRAE Efficiencies: 30-35%  
MERV Performance Rating: 8

## Multi-Pleat XL11 and XL11 HC

- MERV 11 extended surface pleated panel filter for use in commercial and industrial air filtration systems where a higher degree of clean air is desired.
- Standard Capacity and High Capacity media area options.
- High performance synthetic filter media.
- Durable high wet-strength beverage board frame.
- Rust resistant galvanized-dipped expanded metal support grid.
- Available in a wide range of standard and custom sizes.
- UL Classified.

ASHRAE Efficiencies: 60-65%  
MERV Performance Rating: 11

## Multi-Pleat Green 13

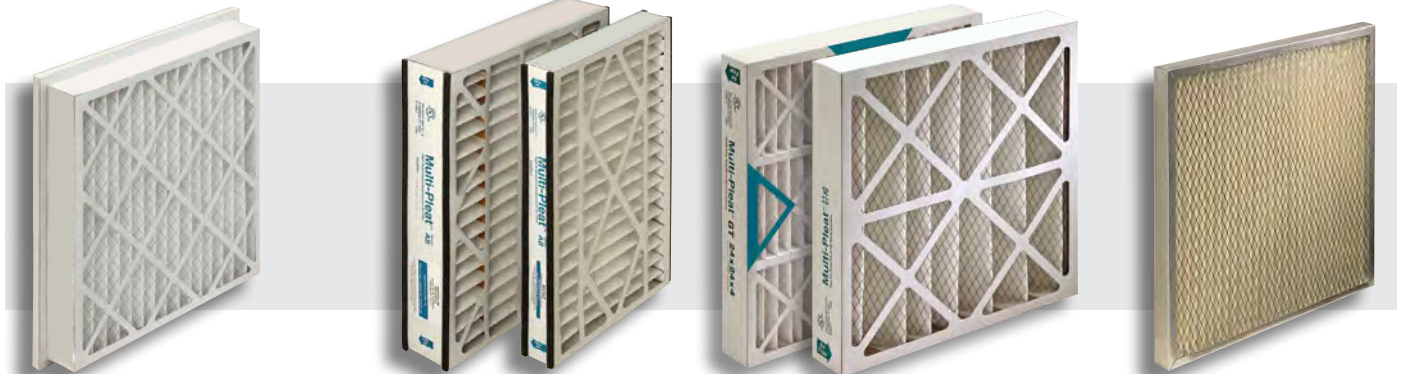
- MERV 13 efficiency rating meets the criteria of the US Green Building Rating System.
- High efficiency extended surface pleated filter designed for use in commercial and industrial air filtration systems where higher efficiencies are desired.
- High performance synthetic filter media.
- Low resistance to airflow compared to competitive models.
- Durable high wet-strength beverage board frame.
- Rust resistant galvanized-dipped expanded metal support grid.
- Available in a wide range of standard and custom sizes.
- UL Classified.

ASHRAE Efficiencies: 85-90%  
MERV Performance Rating: 13  
Consult Bulletin: K-608 B

## Multi-Pleat Elite™

- High performance MERV 8 mechanical air filter featuring a combination of performance and low initial cost.
- Exclusive vForm™ Pleating Technology maintains uniform pleat spacing in every filter.
- Low resistance to airflow reduces energy costs.
- Durable high wet-strength beverage board frame and cross braces.
- Completely incinerable.
- UL Classified.

ASHRAE Efficiencies: 30-35%  
MERV Performance Rating: 8



## Multi-Pleat SA Pleated Panel Filters with Built-in Header

- 4" deep pleated panel constructed with a 13/16" peripheral header for easy installation into side access housings.
- Durable high wet-strength beverage board frame.
- Rust resistant galvanized-dipped expanded metal support grid.
- Available in three standard sizes.
- UL Classified.

ASHRAE Efficiency: 30-35%  
MERV Performance Rating: 8

## Multi-Pleat Series AB, HW and SG Pleated Panel Filters for Residential Air Cleaners

- We offer a complete line of MERV 8, MERV 11, and MERV 13 replacement filters for commercial and residential air cleaners such as Airbear\*, Honeywell\*, SpaceGard\* and other major brands.
- High performance synthetic filter media.
- Durable high wet-strength beverage board frame.
- Rust resistant galvanized-dipped expanded metal support grid.
- UL Classified.

ASHRAE Efficiencies: 35% and 65%  
MERV Performance Ratings: 8, 11, 13

## Multi-Pleat GT and GT HD Pleated Panel Filter

- Extended surface pleated panel designed for use as a prefilter in gas turbines, centrifugal compressor air intakes, and other high velocity systems.
- HD features Ultra heavy-duty moisture-resistant frame and is designed for high humidity applications.
- Specialized high loft synthetic media in two configurations HD1 and HD3 with longer filter life and higher efficiency.
- Media is supported by a rust resistant metal grid.
- Available in a wide range of sizes.
- UL Classified.

ASHRAE Efficiency: 30-35%  
MERV Performance Rating: 8

## Multi-Pleat HT High Temperature Pleated Panel Filters

- Designed for use in high temperature baking ovens found in many painting processes.
- Aluminized frame will not chip or flake.
- Ultrafine microfiberglass media.
- Rust resistant expanded aluminum support grid.
- Available in a wide range of standard and custom sizes.
- UL Classified.

ASHRAE Efficiency: 35-40%  
MERV Performance Rating: 8  
Consult Bulletin: PB-594



# Medium and High Efficiency Extended Surface Filters



## 4 Ply Duo-Cube Filters

- 4 Ply Duo-Cube provides the highest performance characteristics of any selection from the Duo-Cube series. Each filter has internal wire frame around perimeter and seals tightly into holding frame without the use of clips.
- Anti-Microbial treated MERV 8 media provides exceptional protection.
- Self-Seal model eliminates air bypass and requires no clips or fasteners.

ASHRAE Efficiency: 30-35%  
MERV Performance Rating: 8



## 3 Ply Duo-Cube Filters

- 3 Ply Duo-Cube provides medium efficiency. Each filter has internal wire frame around perimeter and seals tightly into holding frame without the use of clips.
- Excellent for high moisture environments.
- Antimicrobial-treated filter media.
- Medium efficiency, self supporting synthetic cube filter provides excellent dust holding capacities.

ASHRAE Efficiency: 30-35%  
MERV Performance Rating: 8



## 2 Ply Duo-Cube Filters

- Excellent for high moisture environments.
- Medium efficiency, self supporting synthetic cube filter provides excellent dust holding capacities.
- Antimicrobial-treated filter media.
- Self-Seal Duo-Cube has internal wire frame around perimeter and seals tightly into holding frame without the use of clips.

ASHRAE Efficiency: 30-35%  
MERV Performance Rating: 6-8



## Standard Duo-Cube Filters

- Standard Duo-Cube fits existing basket-type framework.
- Excellent for high moisture environment.
- Medium efficiency, synthetic cube filter provides excellent dust holding capacities.

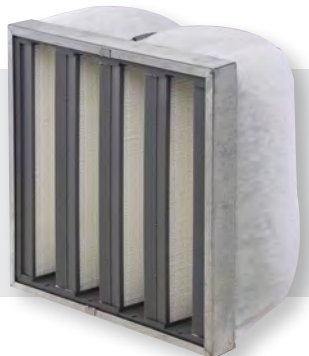
ASHRAE Efficiency: <20%  
MERV Performance Rating: 5-6



## Duo-Pak 40 Synthetic Pocket Filters

- Excellent for high moisture environments.
- Medium efficiency, self supporting synthetic pocket filter provides excellent dust holding capacities.
- Antimicrobial-treated filter media.
- Duo-Pak 40 has internal wire frame around perimeter and seals tightly into frame without the use of clips.

ASHRAE Efficiency: 20-35%  
MERV Performance Rating: 6-8



## DuraGlove Cube Prefilter

- The DuraGlove Prefilter is designed to prolong the lifecycle of the DuraMAX 4v Final Filter in reverse-mount installations.
- Reverse-mount installations, in which DuraMAX 4v Final Filters are installed with the "V's" as the air entry side, are common in inlet housings where limited space makes it difficult to install a separate bank of prefilters.
- The DuraGlove is constructed with durable synthetic filter media formed into a cube configuration and fits snugly onto the air entry face of the DuraMAX 4v.
- Several standard sizes are available.

ASHRAE Efficiency: 30%-35%  
MERV Rating: 8



## MicroSafe Antimicrobial-Treated Filters

- A complete range of pleated filters, panel filters, pocket filters and rigid filters treated with a proven antimicrobial.
- MicroSafe antimicrobial-treated filters help control harmful mold, mildew, and bacteria in the air handling system.
- UL Classified.

ASHRAE Efficiency: 30-35%  
MERV Performance Ratings: 4-16  
Consult Bulletin: K-994 (section 12 product binder)

### MicroSafe™ Antimicrobial Treatment is available on the following products:

- BioMAX CS
- BioMAX HEPA
- BioMAX V-2000
- Duo-Cube
- Duo-Pak 40
- DuraMAX 2v
- DuraMAX 4v
- Maxi-Grid
- MicroMAX
- MicroSafe ES
- Multi-Cell
- Multi-Flo
- Multi-Sak
- Synthetic Air Filter Media

Precision Filtration Products · P.O. Box 218 Pennsburg, PA 18073

Phone: 215-679-6645 · Fax: 215-679-6648 · sales@precisionfiltration.com · www.precisionfiltration.com

# Disposable Filters, Automatic Rolls, Bulk Filter Media and Washable Filters



## Automatic Roll Filters

- Replacement roll filters for all existing roll filter equipment: American Air Filter Roll-O-Matic\*, Continental Conomatic and Conomannual\*, Farr Roll Kleen\*, Cambridge\* Electro-Aire\*, and all other major automatic roll filter and unit ventilator equipment.
- Five media choices:
  - Two grades of glass fiber media and three grades of synthetic media.
- All medias consist of progressively dense fibers supported by an integral scrim backing.

ASHRAE Efficiency: 20-35%  
MERV Performance Rating: 4-8

## Commercial/Industrial C&I Disposable Filters

- Economical panel filter for any HVAC application.
- Rugged, moisture-resistant frame.
- Graded density media pad. Synthetic or fiberglass media options.
- One piece frame. Interlocking miter corner for extra-strength and durability.
- A thermoplastic sealant is used to bond the media on all sides of frame.
- Available in 1" and 2" thicknesses.
- All popular standard sizes and custom sizes.

ASHRAE Efficiency: <20%  
MERV Performance Rating: 5

## Synthetic and Fiberglass Bulk Filter Media and Pads

- A wide range of synthetic and fiberglass medias for commercial and industrial applications.
- Synthetic media is available in 1/2", 1", 1 1/2" and 2" media thicknesses.
- Fiberglass media is available in 1/2", 1", 2" and 4" media thicknesses.
- All types are offered in pre-cut pads or bulk rolls.

ASHRAE Efficiencies: 20-35%  
MERV Performance Ratings: 4-8

## Original Equipment Replacement Cartridges



FPFUSA offers a series of replacement filter cartridges designed to fit the existing original equipment baskets and framework of four "first generation" filter housings.

### Multi-Test Cartridge (pictured above)

- For Camfil HP\* systems.  
ASHRAE Efficiency: 25-30%, 45-55%, 80-90%, 90-95%  
MERV Performance Rating: 7, 10, 13, 14

### Multi-Test Rigid

- For Cambridge Rigid Aerosolve\* systems.  
ASHRAE Efficiency: 55%, 85%, 95%  
MERV Performance Rating: 7, 12, 16

### Multi-45 Cartridge

- For Continental Air Filter Cono 45 and Cono Flo\* systems.  
ASHRAE Efficiency: 45-55%  
MERV Performance Rating: 10

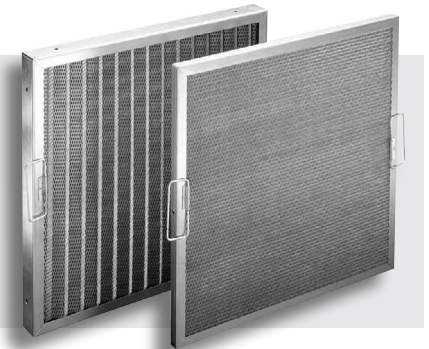
### Duo-Cap Cartridge

- For Cambridge Hi Cap\* systems.  
ASHRAE Efficiency: 30-35%  
MERV Performance Rating: 8



## Pad Holding Frames

- The Pad and Frame System offers an easy and cost-effective method of achieving proper air filtration.
- Easy-open gate allows for quick filter changes.
- Galvanized steel construction.
- Available in all popular standard sizes and also in custom sizes.
- Use with any Synthetic or Fiberglass Filter Media pad.



## MS and MA Permanent Washable Filters

- Type MS Steel and Type MA Aluminum Filters are constructed with rugged components designed to offer excellent filtration performance in HVAC systems, grease hoods, or any applications where a permanent, cleanable filter is required.
- Available in a wide variety of standard and custom-made sizes.
- Spray adhesive is offered to further enhance dust holding properties.

ASHRAE Efficiency: <20%  
MERV Performance Rating: <6

\* Competitive brand and trade names are for product identification purposes only.

# Filters for Paint Overspray and Industrial Finishing Applications



## SprayStop Paint Arrestors

- Wide range of media types and styles to provide the best solution for overspray collection in every application.
- All medias removal efficiency are rated above 99%.
- All medias available in bulk rolls, pads, or pre-cut blankets.

### SprayStop S

Standard Capacity Synthetic media, Bulletin: PB-798-1

### SprayStop SHC

High Capacity Synthetic media, Bulletin: PB-798-2

**SprayStop HCX** Synthetic media, Super High capacity, Bulletin: SS-HCX (exceeds New NESHAP 40CFR 63 and MACT standards)

### SprayStop STK

High efficiency synthetic media, Bulletins: PB-798-9, PB-798-22

### SprayStop FG

Fiberglass media, Bulletin: PB-693-1

### SprayStop Expanded Paper

(six types available) Bulletins: PB-693-3, 4, 5, 6, 7

Other popular types of overspray collection media are available

## SprayStop Overspray Pocket Filters

- Pocket and Cube Styles will extend life and increase efficiency.

**SprayStop S Duo-Pak** Standard Capacity Synthetic media, Bulletin: SS-SDP (Exceeds New NESHAP 40CFR 63 regulation and MACT standards)

**SprayStop HC Duo-Pak** High Capacity Synthetic media, Bulletin: SS-HCDP (Exceeds New NESHAP 40CFR 63 regulation and MACT standards)

**SprayStop Universal Cube HE** Synthetic media, High Capacity/High Efficiency Bulletin: SS-UCHE (Exceeds New NESHAP 40CFR 63 regulation and MACT standards)

**MERV Performance Rating: 7-14**

## SprayStop NESHAP Multi Stage Systems Overspray Collection Filters

- Designed for applications where the removal of chromates, maximum final filter life, airflow, and efficiency are desired.
- Exceeds the New NESHAP 40CFR 63 regulations for Aerospace painting and de-painting operations and MACT standards.

### SprayStop NESHAP 2 Stage System

Bulletin: SS-2stage

### SprayStop NESHAP 3 Stage System

Bulletin: SS-3stage

- All SprayStop System can be customized to meet the requirements of any coating operation. Available in all sizes and configurations for optimum filter life and value.

**MERV Performance Rating: 11-15**

## SprayClean Diffusion & Air Make-up Panels, Media and Pocket Filters

- Available in pads, blankets, rolls, bags and cubes to provide maximum protection in basic and more specialized types of air filtration. SprayClean exceeds critical requirements for removing dirt particles, provides blemish free finish, high efficiency, extended filter life and more.

**KR-1 Panel** (Bulletin: KR1-DP)

99+% efficient at 10 micron

**Maxi-Grid 600** (Bulletin: AIG 600)

99+% efficient at 5 micron

Internally Supported Panels and Link K-902

**KDF 600 Diffusion Media** PB-798-3

**Duo-Pak 550** Merv 8 PB-798-5

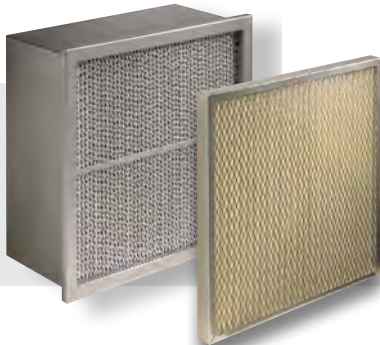
**MERV Performance Rating: 5-15**

**UL Classified**

**Consult Bulletin: K-798B**

**Paint Booth Accessories:** Booth floor paper, 9 different selections/sizes.

**Paint Arrestor Accessories:** Holding frames, Wire rods, Snap-in-grid, Conversion grid, Conversion grid flange, Conversion pak, Spray-Pak grid, Conversion pak upper support grid.



## High Temperature Rigid Air Filters

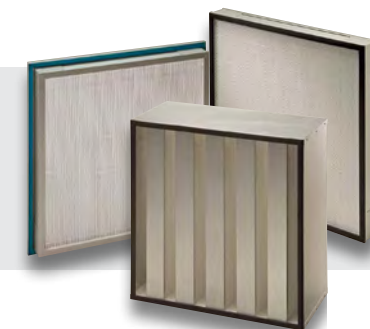
- High efficiency, extended surface air filter designed for use in applications with temperatures ranging from 350° to 900°.
- Microfiberglass media with Double-Edge™ corrugated aluminum separators.
- Aluminized steel cell sides with aluminized steel faceguards on air entry and air exit sides are ideal for use in paint ovens where high temperatures may cause galvanized steel to scale or flake.
- Contains no silicone.
- Single, double or no header configurations.
- Available in all popular sizes.

**ASHRAE Efficiencies:** 30%, 65% and 95%

**UL Classified**

**MERV Performance Rating:** 8-15

**Consult Bulletin:** K-787B



## BioMAX Powder Booth Final Filters

- BioMAX HEPA filters are designed for use in industrial powder coat installations.
- Microfiberglass media with thermo-plastic glue-bead minipleat separators.
- Anodized extruded aluminum cell sides
- Wide range of standard and custom sizes.
- Gasket seal, gel seal, and knife-edge styles available. Pictured left to right:
  - BioMAX Gel Seal
  - BioMAX Reverse Gel Seal
  - BioMAX-V2000 high capacity 2000 CFM
- 100% scan tested for leaks prior to shipping.

**Efficiency Range:** 95%-99.999% PAO

(Poly Alpha Olefin) @ .3 micron particles



## Industrial Cartridges Filters

- Available in a wide range of medias and sizes.
- For powder coating, bead blasting, and pollution control applications.
- Ensure maximum performance and value in source capture and reclaim capability.

**MERV Performance Rating:** 11-15

**Consult Bulletin:** PB-798-20

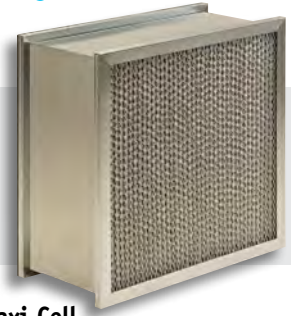
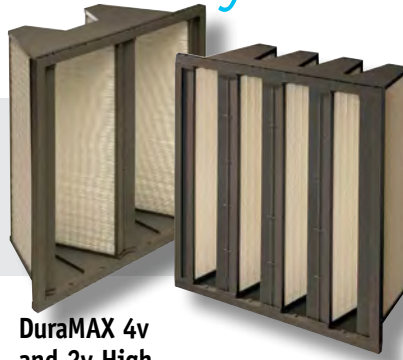
Precision Filtration Products · P.O. Box 218 Pennsburg, PA 18073

Phone: 215-679-6645 · Fax: 215-679-6648 · sales@precisionfiltration.com · www.precisionfiltration.com





# Industrial Cartridge Filters for Turbomachinery and Air Inlet Systems



## Industrial Cartridge Filters for Gas Turbines and Environmental Dust Collection

- PFPUSA has replacement cartridges for all types of gas turbine barrier systems and dust collector systems.
- All filters are constructed to strict specifications and are available in multiple sizes and media configurations to meet a variety of application and environmental requirements.
- High Performance Media Options: ICF-11HF, ICF-12, ICF-13 & ICF-15.
- High moisture-resistance.
- Multiple media options for different environments (High Flow Spun Bond, Synthetic, Paper, Nano, Melt Blown, Poly Propylene, Synthetic Paper).
- Durable construction.
- Replaces OEM manufactured filters.
- Multiple core and end cap options.
- Uniform pleat spacing.

### ASHRAE Test Standards

52.1-1999 and 52.2-2007.

MERV Performance Rating: 11-15

Consult Bulletins: PB-798-20 and K-GT909

## DuraMAX 4v and 2v High Efficiency Minipleat Filters

- 12" deep extended surface minipleat V-style filter provides unequalled combination of low resistance to airflow, high efficiency, and prolonged filter life.
- DuraMAX 4v is designed for use as a final filter. 2v model is designed for use as a prefilter. 4v final filter packs 194 ft<sup>2</sup> media in a 24x24x12 frame. 2v prefilter contains 110 ft<sup>2</sup> of media.
- Both models are available in microfiberglass or synthetic filter media.
- Standard 4v and 2v models are constructed with an all plastic frame. They have no metal components which makes them completely incinerable after use.
- Also available with protective expanded metal faceguards upon request.
- 4v model may be combined with the DuraGlove™ Prefilter in reverse-mount installations.
- Several standard sizes are available.

ASHRAE Efficiencies: 65%, 85%, 95% and 98%

MERV Performance Rating: 11-15

UL Classified

Consult Bulletins: K-996B (4v), K-1205B (2v) and K-GT909

## Maxi-Cell Gas Turbine Inlet Filters

- Extended surface, high efficiency barrier filter designed for maximum performance in the most extreme atmospheric conditions.
- Dual-layered microfiberglass media with Double-Edge™ corrugated aluminum separators. (Available with coated separators for highly corrosive environments).
- Galvanized steel cell sides with expanded metal faceguards on air entry and air exit sides.
- Reliable performance in any climate.
- Airflow performance level as high as 2500 cfm
- Single header or Double header configurations.

ASHRAE Efficiencies: 65% and 95%.

MERV Performance Rating: 11-14

UL Classified

Consult Bulletin: K-386-B



## Multi-Pleat GT Pleated Panel Filter

- Extended surface pleated panel designed for use as a prefilter in gas turbines, centrifugal compressor air intakes, and other high velocity systems.
- Integral pleat supports.
- High performance synthetic filter media.
- Media is supported by a rust resistant metal grid.
- Available in a wide range of standard and custom sizes.

ASHRAE Efficiency: 30-35%

MERV Performance Rating: 8

UL Classified

Consult Bulletin: K-906B



## Multi-Pleat GT-HD Heavy Duty Pleated Panel Filter

- Ultra heavy-duty frame is moisture-resistant and is designed for high humidity applications.
- Specialized high loft synthetic media in two configurations HD1 and HD3 is moisture-resistant. HD3 offers longer filter life and higher efficiency.
- Replacement for pre-filters provided in OEM inlet air housings.
- Media is supported by a specialized heavy-duty rust resistant galvanized dipped expanded metal grid.

ASHRAE Efficiency: 25-35%

MERV Performance Rating: 7-8

UL Classified

Consult Bulletin: K-906C



## Synthetic and Fiberglass Bulk Rolls and Pads

- A wide range of synthetic and fiberglass medias for use as a prefilter in gas turbines, centrifugal compressor air intakes, and other high velocity systems.
- Synthetic media is available in .5", 1" and 1.5" thicknesses.
- Fiberglass media is available in 1", 2" and 4" thicknesses.
- All types are offered in pre-cut pads or bulk rolls.

ASHRAE Efficiencies: 20-30%

MERV Performance Ratings: 4-8

UL Classified

Consult Bulletins: PB-001-B, K386D, K-GT909



# Carbon and Gas Phase Filtration



## DuraPURE V-Style Gas Phase Filter

- Industrial grade extended surface gas phase adsorption filter for removal of volatile organic compounds (VOC), chemical contaminants, and odors.
- Standard Capacity and High Capacity options.
- Available with premium grade activated carbon, impregnated carbon, or potassium permanganate.
- DustNet "afterfilter" prevents carbon dust downstream.
- Three standard sizes available.
- Solvent Capacity of Standard Capacity DuraPURE: 5 lbs.
- Solvent Capacity of High Capacity DuraPURE: 8 lbs.
- Carbon Activity Rating: Minimum 60% on carbon tetrachloride (CCl4) at 25° C.



## OdorKleenES Pleated Panel Filter

- Light duty carbon filter for removal of odors in commercial or light industrial applications.
- Carbon impregnated filter media.
- Durable high wet-strength beverage board frame.
- Rust resistant galvanized-dipped expanded metal support grid.
- Available in a wide range of standard sizes.

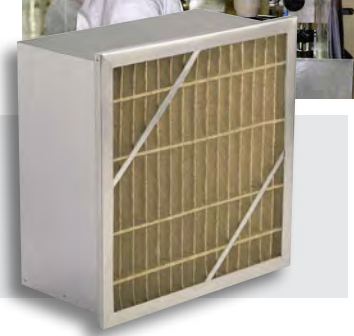
ASHRAE Efficiencies: 25-30%  
MERV Performance Rating: 7  
Consult Bulletin: K-693A



## OdorKleen 250 New CarbonWeb® High Efficiency Media-Superior Performance

- OdorKleen 250 offers superior performance in gaseous and odor adsorption, as well as excellent particulate filtration. This "combination" product contains 250gsm of carbon product attached to a high efficiency cotton-polyester media blend of granular activated carbon and activated alumina impregnated with potassium permanganate.
- Patented, flexible CarbonWeb® Media-carbon will not settle.
- Great particulate efficiency.
- Superior odor removal.
- Low pressure drop.
- Virtually no dusting.

ASHRAE Efficiency: 35%  
MERV Performance Rating: 8



## DuraKleen High Efficiency Gas Phase Filter

- The DuraKleen gas phase adsorber offers superior performance in gas and odor applications where ultra high efficiencies are required.
- More and more facility and process engineers are becoming sensitive to removing low levels of gases known as airborne molecular contamination (AMC), which are typically 1 part per million (ppm) and less. DuraKleen removes low level gaseous pollutants to help provide acceptable levels of indoor air quality for manufacturing processes, museums, hospitals, commercial office buildings, cleanrooms, and many others.
- 26 gauge galvanized cellsides.
- Removes VOC's (volatile organic compounds), chemical and contaminants.
- Small mesh size carbon for high efficiency.
- Uses Celbond Particulate Structure (CPS) Technology.
- More over catching surface area with less weight.
- Low pressure drop.
- Virtually no dusting.
- Excellent polishing filter for high contaminant concentrations.



▲ Side Access Housings

Carbon and Gas Phase Filter Housings ▶

PFPUA offers the premier brand of high efficiency air filtration products and the industry's broadest range of air filters for any



## Type AR Filter Holding Frames

- Designed for simple and cost-effective construction of filter banks.
- 16 gauge galvanized steel components.
- Each frame is equipped with gaskets to provide protection against air bypass.
- Pre-punched holes in the sides of the frame make filter bank construction easy and trouble-free
- Wide selection of clips and latches.



## Specialty Media and Accessories

- Precision Filtration Products offers many air filtration accessories and medias for specialized applications:
- Foam media for room air conditioners.
  - Replacement filters for unit ventilation equipment.
  - Medias for ink and lint control.
  - Textile media for food processing and tobacco applications and much more....

## Air Filter Housings

- Versatile line of Air Filter Housings designed for easy installation into original equipment and retrofit filtration systems.
- Standard housings are constructed of 16 gauge steel and can be manufactured to meet specifications in ASHRAE or HEPA applications.
- A wide variety of optional features and housing depths.